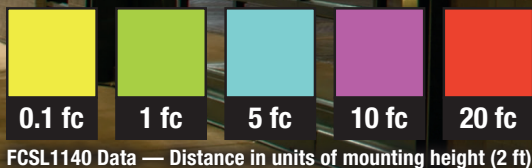


FCSL1100 World Class Series: The Next Generation of Step Lights

- **Built to Last in Any Environment** – extreme defense against ingress, impact, and corrosion
- **Right Light-Right Place** – high efficiency, precision optical control, fewer luminaires required, dark-sky compliant
- **Modern Classic** – fastener free, timeless design, premium materials, 5 unique faceplates
- **State-of-the-Art Electronics** – universal voltage, Tri-Dim 1% dimming standard, high efficiency power and LED pairing, flicker-free
- **Contractor Ready** – quick ship backbox, flexible mounting options, quick and easy install

5 Faceplate Styles



Note: Luminaire spacing is approximately 6 feet apart.

FCSL1100 Series Step Lights are enhanced with improved performance and ease of installation — optimized LED and driver pairing ensures long life featuring a universal back box, snap-fit installation, marine grade die-cast aluminum housing, 316 Stainless Steel tamper-proof hardware with all the options expected from FC Outdoor Lighting. Offered in 5 different faceplate options, Tri-Dim (0-10V 1%, TRIAC & ELV) dimming (standard) and flexible mounting in multiple substrates all backed by our 10-Year Limited Warranty.

Note: FCSL1140 model shown in cutaway.



Aesthetic and Robust Fasteners:

Fastener free faceplate offered standard for optimal aesthetics, simply snap in luminaire during final installation for a sleek look unlike any other step light on the market. Ultra corrosion resistant, 316 Stainless Steel hardware comes standard on the exterior including tamper-proof screw option for high-traffic or vandal-prone areas.



Zero Uplight Design:

Full cutoff optics ensure compliance with dark-sky and light pollution-sensitive applications (for selected models).



Extreme Ingress Protection:

First in the industry for IP66, IP67 and IP68 Ratings in a singular product per (IEC 60529) standards. Ensuring ultimate protection in the most severe wet environments including washdowns.



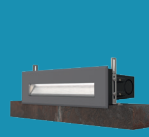
Industry Leading Dimming (Standard):

Equipped as standard with Tri-Dim control (0-10V, TRIAC, ELV) with 1% dimming, providing flexible dimming protocol compatibility without the need for special orders.

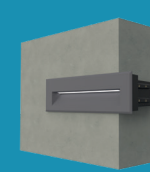
Drywall Mount



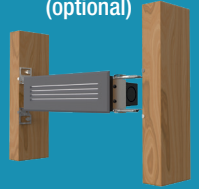
Brick Mount



Concrete Mount

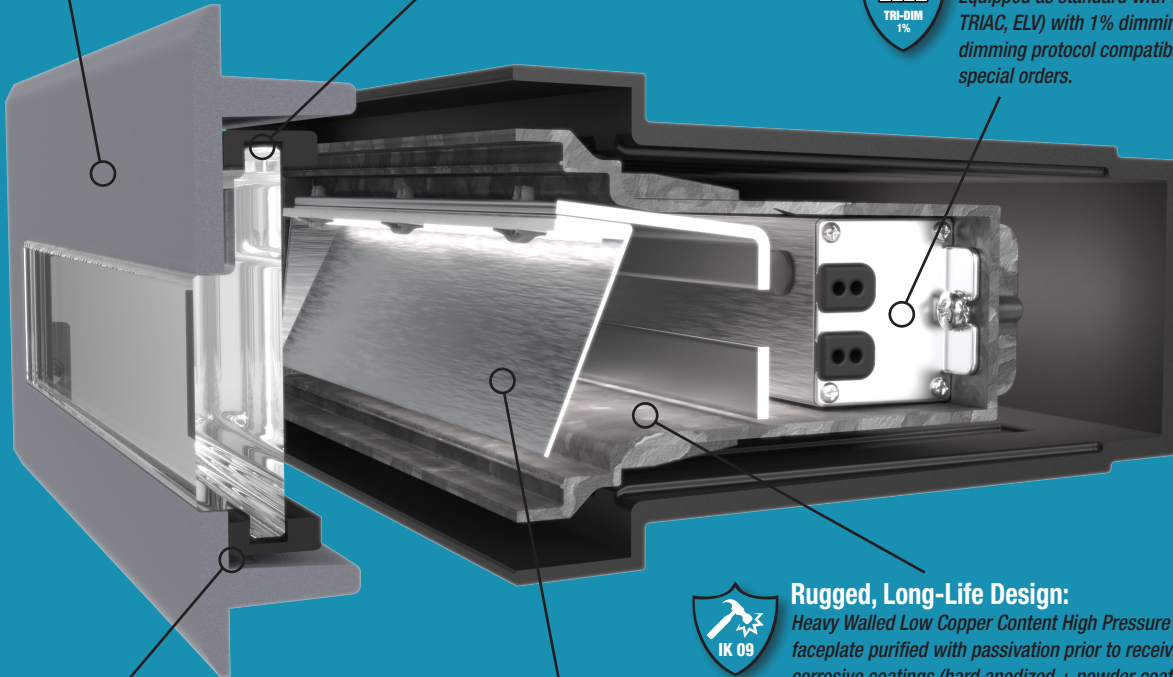


Hanger Bar (optional)



Flexible Mounting Options:

Supports wall and mortar installations with backbox and faceplate configurations for fast, secure installs.



Fail-Safe Waterproofing System:

High-quality inert solid silicone gasketing, breather vents, anti-syphon cables, and waterproof wire nuts ensure complete protection against water ingress and corrosion, extending the life of the sealing system.



Rugged, Long-Life Design:

Heavy Walled Low Copper Content High Pressure Die-cast housing and faceplate purified with passivation prior to receiving superior anti-corrosive coatings (hard anodized + powder coat six-stage, 5K hour salt spray to B117 and AAMA 2604 standards (AAMA 2605 optional). Enclosed with purely opaque inert silicone gasketing and an IK09 (IEC 62262) impact-resistant crystal clear low iron heavy gauge glass to ensure durability in even the most extreme environments.



High-Efficacy Lighting Performance:

Precision German-engineered reflector materials maximize lumens-per-watt efficiency with advanced semi-specular diffusion, delivering multiple tunable output packages that provide up to twice the footcandle levels of competing products reducing luminaire quantities by half on most projects.



Construction-Ready Backbox:

Industry leading heavy-walled polycarbonate back box delivers maximum impact resistance and UV protection (UL 746C F1), combined with the highest flame rating in the industry (UL 94 5VA) and a factory-standard ETL Certified wiring compartment per NEC for primary and thru-wiring, featuring a splatter guard to block debris during rough-in or concrete pours for contractor-ready installation with all mounting options provided in one easy to use kit. Back box kit can ship in < 48 hours upon receipt of order to fast track construction phase on-site prior to factory sealed step light luminaire giving the contractor the ability to finish projects quickly without risk for installer to ensure a seal to maintain wet location rating.

Please see the following (2) pages for detailed competitive comparison information.

Competitive Comparison

Ingress Protection and Durability

FCSL1100 Series: IP66, IP67 and IP68 Ratings (IEC 60529) / IK09 (IEC 62262) - suitable for extreme weather, wet locations, or wash-down applications.

- Competitor Product 1: IP65 / IK04-IK07 — appropriate for outdoor use, but not rated for high pressure jets or temporary underwater exposure or as robust.
- Competitor Product 2: IP65 / NO IK rating — good moisture resistance but limited compared to IP68 and no IK (Impact) rating.

Construction and Design

FCSL1100 Series: Heavy Walled Low Copper Content Die-Cast housing and fastener free faceplate with anti-corrosive coatings (hard anodized + powder coat six-stage, 5K hour salt spray to B117 and AAMA 2604 standard). Inert silicone gasketing and an IK09 (IEC 62262) impact-resistant crystal-clear low iron heavy gauge glass, 316 Stainless Steel exterior hardware including tamper-proof screw options.

- Competitor Product 1: Die-cast or stainless steel with visible fasteners; recessed housing required.
- Competitor Product 2: Slim profile aluminum with glass face; typically recessed, requires special mounting conditions.

Design Versatility

FCSL1100 Series: Multiple faceplate styles, finishes, and outputs within the same family.

- Competitor Product 1: Limited design modularity; fixed optics/styles per model.
- Competitor Product 2: Sleek design but fewer variations in optical or lumen packages.

Lumen Output Range

FCSL1100 Series: Configurable outputs from ~76 lumens (low) to ~1300 lumens (high) across the product line.

- Competitor Product 1: Fixed lumen packages typically between 266–1300 lm, with limited limited lumen ranges.
- Competitor Product 2: Lower output range around 120–279 lm, more focused on ambient marker lighting.

Performance and Efficiency

FCSL1100 Series: Delivers up to ~111 lm/W in high-output configurations.

- Competitor Product 1: Typically, under 60 lm/W one model at 99lm/W, with design focused more on output with minimal glare control options.
- Competitor Product 2: Efficacy ranges from 24–71 lm/W, depending on the model.

Scan Me



Please see the following page for more detailed competitive comparisons or scan the code to go directly to all 5 step lights in our new FCSL1100 Series!

Light Level Performance at 18-Inch Mounting Height (~0.1 fc Target)

FCSL1100 Series offers half as many luminaires required for the same space!

Low-output (~76 lm, ~3 W): Provides ~0.1 fc within ~1.5–2 ft radius (~7–12 ft² illuminated area); ideal for close-proximity step or pathway safety lighting. Luminaire-to-luminaire spacing ~6–8 ft on center.

Mid-output (~400–500 lm): Extends ~0.1 fc coverage to ~3–4 ft radius (~30–50 ft² area); supports broader walkway or tread illumination. Luminaire-to-luminaire spacing ~12–16 ft on center.

High-output (~1,300 lm, ~13 W): Provides an impressive ~0.1 fc over ~6–7 ft radius (~110–150 ft² area), optically enabling wider coverage with fewer luminaires. Luminaire-to-luminaire spacing ~24–28 ft on center.

- Competitor Product 1: Low-output provides ~0.1 fc within ~1–2 ft radius (~3–12 ft² area). Fixture-to-fixture spacing ~4–8 ft on center. Mid-output Coverage extends to ~2–2.5 ft radius (~12–30 ft² area). Fixture-to-fixture spacing ~8–12 ft on center. No models exceed high-output coverage is limited to mid-output range.
- Competitor Product 2: No models offered in low-output. Mid-output reaches ~0.1 fc within ~2–2.5 ft radius (~12–20 ft² area). Fixture-to-fixture spacing ~8–10 ft on center. High-output reaches ~0.1 fc within ~4–6 ft radius (~50–110 ft² area). Fixture-to-fixture spacing limited to ~14 ft on center due to lack of optical front and side throw control.

Dimming Capability

FCSL1100 Series: Tri-Dim control (0–10V, TRIAC, ELV) to 1% dimming — works across protocols and control systems.

- Competitor Product 1: 1–10V or DALI dimming, no TRIAC/ELV support.
- Competitor Product 2: Limited or no dimming options for most step light models.

Installation Flexibility and Peace of Mind

FCSL1100 Series: Each steplight is factory sealed for wet location and mounts directly to backbox kit as a ETL Certified wiring compartment per NEC for primary and side or back thru wiring, with splatter guard and mounting options. Ships in less than 48 hours to fast-track construction ahead of luminaire installation. No more guts! Or risk for the installer to ensure a seal to maintain the wet listing!

- Competitor Product 1: Requires custom recessed housings or concrete pours. Not factory sealed requiring contractor to seal on-site.
- Competitor Product 2: Bulky recessed mounting only with limited adjustment and single mounting, drywall mount sold separately as a add on, requires light to be unsealed during installation, requires light to be unsealed during installation and resealed by contractor.

Warranty and Support

FCSL1100 Series: Backed by a 10-Year Limited Warranty; UL listed, U.S.-based support.

- Competitor Product 1: Offers a 5-year limited warranty, dependent on the model and market.
- Competitor Product 2: Offers a 5-year limited warranty, requires factory-only repairs, purchaser-paid freight.

Scan Me



FC Lighting reserves the right to change, without notice, details or specifications in product design.
Product use certifies agreement to FC Lighting's terms and conditions.

